

## While visiting our site, please:

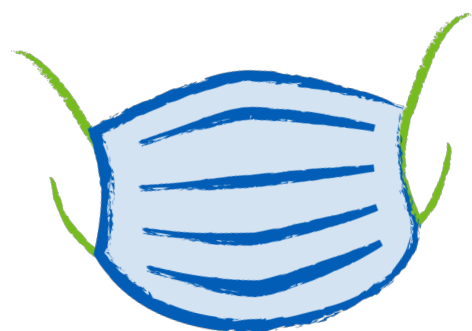
Inform reception or the department you're visiting if you have **any respiratory symptoms**.

### Respiratory symptoms include:

- Chest or nasal congestion
- Sore throat
- High temperature
- Wet or dry cough
- Shortness of breath
- Runny nose
- Fatigue
- Body aches
- Diarrhoea
- Feeling or being sick
- Sudden onset of rashes



### We also ask that if you have symptoms:



**Wear a  
face mask**



**Practice good  
hand hygiene**

