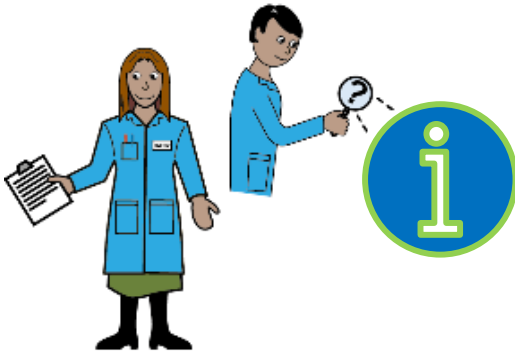
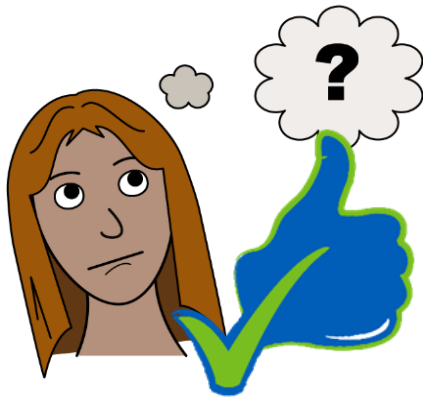


# A guide to research



Research is where we find information to answer a question



We are looking at information about health and how to make things better in health services



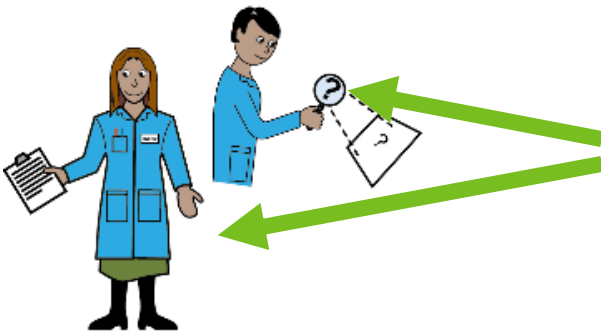
It helps us know more about illnesses and understand the way people think, feel and act



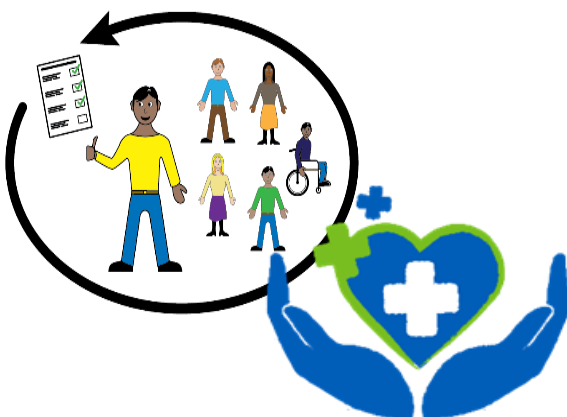
Research can help make treatments better and make new ones



Research for people with learning disabilities could help healthcare workers to support you and others better



The people who do the research are called **researchers**



You can help us by taking part in research studies. We want you to tell researchers what is important to you

Research can take place:



In your home  
or chosen place



At health  
appointments



In special clinics



You might be asked questions...

On your own



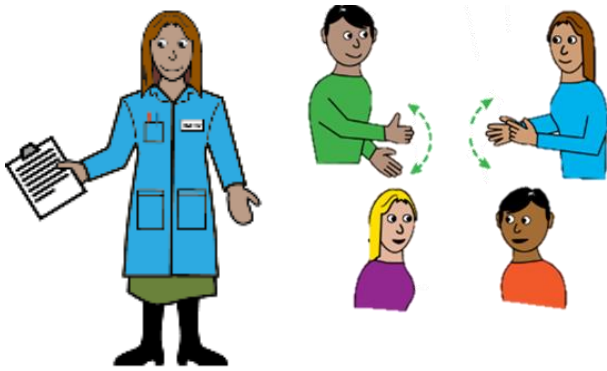
In a group



On a questionnaire  
or form



You could be asked to try a new treatment



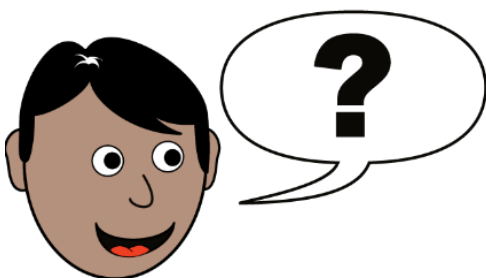
Researchers will communicate in the best way for you and your support needs.



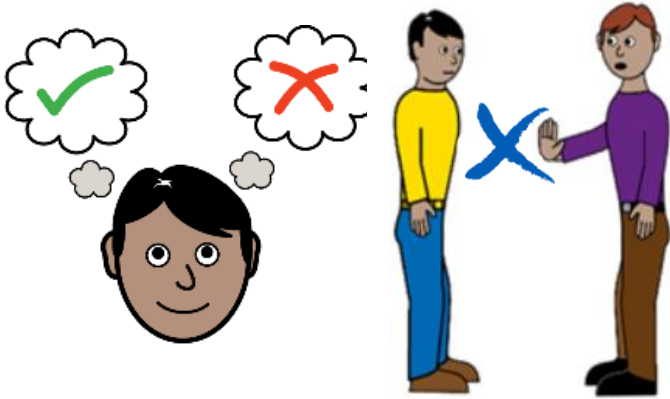
Researchers will give you information about the research so you know what will happen



You can talk to your family, friends and carers about the study



You can ask questions at any time



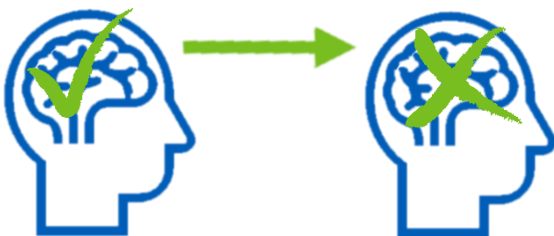
You decide if you want to take part or not. It's ok to say no



Researchers will check that you are happy before starting



Researchers will listen to what you say



You can change your mind at any time



If you would like more information or to get involved please ask your health care practitioner/worker or email

[research@berkshire.nhs.uk](mailto:research@berkshire.nhs.uk)